

KARATE

One

SERIES A

A CORUÑA

2026



WKF



WKF

APRIL 24-26

2026

Karate One – Series A
A CORUÑA (SPAIN)

CONTENTS

1.	WELCOME MESSAGE	3
2.	INTRODUCTION	4
3.	INTRODUCTION KARATE ONE -SERIES A A CORUÑA, 2026.....	4
4.	COMPETITION INFORMATION	5
4.1	Categories	5
4.2	Prizes	5
5.	CONTACT INFORMATION.....	5
5.1	Organizers contact details	5
5.2	LOCAL ORGANISING COMMITTEE CONTACT DETAILS	5
5.3	WKF Event Supervisor contact	6
5.4	Safe Sport contact.....	6
6.	WKF APPROVED PROTECTIONS, KARATEGIS & TATAMIS	7
7.	EVENTS SCHEDULE	10
8.	COMPETITION PROGRAMME	11
9.	RANKING	12
10.	ONLINE REGISTRATION & OFFICIAL ACCREDITATION.....	12
10.1	Athletes Registration	13
10.1.1	Entry Fee	13
10.1.2	Non-Reported Absences	13
10.1.3	Replacement List	14
10.1.4	Payment	14
10.2	Referees Registration	14
10.3	Coaches Registration	15
10.4	Official Onsite Accreditation	15
10.5	Technical Support for Online Registration	16
11.	MANDATORY DOCUMENTS	16
12.	ANTI DOPING EDUCATION	17
13.	WKF ACCREDITED COACH.....	17
13.1	WKF Coach Programme / Accredited Coach Certification (level 1).....	17
13.2	Schedule.....	17
13.3	Online Registration.....	17

13.4	Fees.....	18
13.5	Payment.....	18
14.	MEDIA.....	18
14.1	Press.....	18
14.2	YouTube Streaming.....	18
15.	COMPETITION VENUE.....	19
16.	TICKET FOR SPECTATORS.....	19
17.	HQ HOTEL.....	19
18.	OFFICIAL HOTEL.....	20
18.1	Hotel Price.....	23
18.2	Hotel Prices.....	24
18.3	Transport Services.....	25
18.4	Meals at the Venue.....	25
19.	VISA REQUIREMENTS.....	25
20.	A CORUÑA INFORMATION.....	26
20.1	About A CORUÑA.....	26
20.2	How to get to A CORUÑA.....	26
20.3	Practical Information.....	27
21.	GENERAL INFORMATION.....	27
21.1	Currency and Exchange.....	27
21.2	Business Hours.....	27
21.3	Electricity.....	27
21.4	Local Law.....	28
21.5	Vehicle Driving.....	28
21.6	Safety in the city.....	28
22.	OMISSIONS.....	28

1. WELCOME MESSAGE

1.1 Greeting from the Head of the host NF

It is an honour for the Royal Spanish Karate Federation to welcome all participants to the Karate One – Series A, one of the most important competitions on the World Karate Federation’s international calendar, which on this occasion is being held in the city of A Coruña.

Over these days, A Coruña becomes the epicentre of world Karate, welcoming elite athletes from numerous countries who represent technical excellence, a high level of competition and the values that define Karate: respect, discipline, effort and self-improvement.

The hosting of an event of this magnitude in Spain is a clear demonstration of the strength and international projection of Karate. Competitions such as the Series A reinforce our sporting model, drive the growth of high-performance Karate and contribute to the ongoing development of Karate as a modern, dynamic and fully consolidated discipline within the international sporting landscape.

I would like to express my sincere gratitude to the institutions whose support has made the organisation of this championship possible: the Consejo Superior de Deportes, the Concello da Coruña, the Xunta de Galicia and the Deputación da Coruña.

A Coruña is a city firmly committed to sport, offering excellent facilities and a privileged setting, as well as a rich cultural and gastronomic experience for all visitors.

With the wish that this championship will be a sporting and organisational success, I extend a warm welcome to all participants and encourage you to enjoy this great celebration of international Karate.



Antonio Moreno Marqueño

President of the Royal Spanish Karate Federation

2. INTRODUCTION

The WKF Karate One-Series A is a world-class competition that provides karatekas around the world with more competitive opportunities to shine at the highest level. Presented in an open format thus allowing every athlete in the world to compete, the Karate 1- Series A is framed under the umbrella of the Karate 1 to bring together the best competitors in a series of open championships of unprecedented scale and quality. In addition to this, the Karate 1-Series A offers karatekas the chance to increase their ranking position as the universality of top Karate tournaments is showcased.

While maintaining the individual character of each event, all Series A events have to meet certain standards in order to achieve the above-mentioned goals. Therefore, it is necessary to follow these Karate One – Series A Organizing Rules 2026.

All members of WKF are admitted participating. The competition categories are identical to those of Senior World Championships except for Kumite team.

The number of competitors for **Kumite** modality is limited to a maximum of 96 athletes per category.

For **Kata** modality the number of competitors is limited to a maximum of 128 athletes.

The WKF Competition Rules in force will be applied.

Competitors of individual categories earn ranking points in every WKF Karate1 event according to the official WKF World Ranking regulations.

3. INTRODUCTION KARATE ONE -SERIES A A CORUÑA, 2026

The 2026 Karate One - Series A (A Coruña) will be held next 24th–26th April at the Palacio Deportes Riazor (Rúa Manuel Murguía, S/N, 15011 A Coruña).

4. COMPETITION INFORMATION

4.1 Categories

- Female Kumite: - 50kg, - 55kg, - 61kg, - 68kg, + 68kg
- Male Kumite: - 60kg, - 67kg, - 75kg, - 84kg, + 84kg
- Individual Kata: Female, Male
- Team Kata: Female, Male

4.2 Prizes

For Individual categories (Kumite and Kata):

- Gold medallist: 500 €
- Silver medallist: 300 €
- Bronze medallist: 100 €

For team categories (Kumite and Kata):

- Gold medallist: 600 €
- Silver medallist: 400 €
- Bronze medallist: 200 €

5. CONTACT INFORMATION

5.1 Organizers contact details

Real Federacion Española de Karate

C/ Vicente Muzas, 4

28043 Madrid

Phone +34 91 535 95 87

Email: events.assistant@rfek.es

5.2 Local Organising Committee contact details

Susana Fashho / Raúl Méndez

Email: events.assistant@rfek.es

5.3 WKF Event Supervisor contact

Lucas Valdesi

Email: lucavaldesi76@gmail.com

5.4 Safe Sport contact

WKF events must be safe for all athletes and participants and entirely free from any form of non-accidental violence, namely, harassment and abuse. Any such behavior will not be tolerated.

If you or someone you know has been the victim of abuse or harassment in Karate, get help and report it.

Your first point of contact for any incident at this event is the WKF Event Supervisor, whose contact information you can find detailed above.

Otherwise, any other incident can be reported via the WKF Official Complaint Form and sent to: safekarate@wkf.net

6. WKF APPROVED PROTECTIONS, KARATEGIS & TATAMIS

The Karate One-Series A complies with the highest level of presentation. In order to guarantee the correct delivery of the event, and to ensure the suitable quality of the tournament, exclusively the following brands are WKF Approved for use in the 2026 Karate One- Series A Season.

“WKF APPROVED” SPORT PROTECTIONS



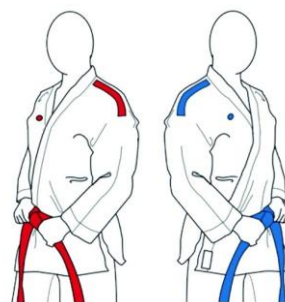
*Click on the logos

CHECK THE COMPULSORY PROTECTIONS FOR THIS COMPETITION

OFFICIAL KARATEGI KARATE ONE – SERIES A

Kumite and Kata karategis with the brand name embroidered on the shoulders in **RED** or **BLUE** are of mandatory use in Karate One- Series A tournaments.

The authorized companies to use these karategis models are:



ADIDAS

ARAWAZA

BESTSPORT

BUDO-NORD

DAEDO

HAYASHI

PUNOK

MOOTO

SMAI

TOKAIDO

WACOKU

WESING

FUJIMAE

KO

KUROBUSHI

SHUREIDO

TUSAH

*Click on the logos

WKF APPROVED HIJAB

In addition, the following additions to attire are allowed:
Voluntary religiously mandated headwear approved by the WKF.

The brands with WKF Approved Hijab are the following:

Arawaza

Budo-Nord

Daedo

Punok

SMAI

Tokaido



“WKF Approved” DISTRIBUTORS ASSISTANCE

*Click on the image to visit the distributors by countries.



“WKF Approved” TATAMIS

ishii

PROGNOME
TATAMI BY TROCELLEN

TaiShan

TATAMIX
STORE

WESING 九日山

*Click on the logos

7. EVENTS SCHEDULE

THURSDAY 23/04/2026	SERIES A	VENUE
REGISTRATION		
10:00 – 17:00 H	<p>TIMESLOTS BY ALPHABETIC ORDER OF COUNTRIES WILL BE APPLIED TO ENSURE A SMOOTH ONSITE REGISTRATION PROCESS. SUCH TIMESLOT WILL BE ESTABLISHED ONCE FINISHED THE ONLINE REGISTRATION.</p> <p>STATIONS</p> <ol style="list-style-type: none"> 1) WAIVER, PASSPORT & ACCREDITATION CHECK 2) SYSTEM CHECK (SPORTDATA) 3) ATHLETE WEIGH-IN 	HQ HOTEL
18:30 – 19:30 H	COACH MEETING	PALACIO DEPORTES RIAZOR
19:30 – 21:00 H	DRAW AND DEFINITIVE SCHEDULE, PUBLISHED ONLINE	PALACIO DEPORTES RIAZOR
19:30 – 21:00 H	REFEREE BRIEFING	PALACIO DEPORTES RIAZOR
WKF COACH COURSE – ACCREDITED COACH CERTIFICATION (LEVEL 1)		
17:30 – 18:30 H	<p>ONSITE REGISTRATION ENTRY: COACH</p> <p>STATIONS</p> <ol style="list-style-type: none"> 1) WAIVER, PASSPORT & ACCREDITATION CHECK 	PALACIO DEPORTES RIAZOR

HQ Hotel: RIAZOR HOTEL – Av.de Pedro Barrié de la Maza, 29, 15004 A Coruña

8. COMPETITION PROGRAMME

DEPORTES RIAZOR (RÚA MANUEL MURGUÍA, S/N, 15011 A CORUÑA)	
DAY/HOUR	COMPETITION
FRIDAY, 24/04/2026 9:00-22:00	<p><u>ELIMINATIONS & SEMI-FINALS & REPECHAGES</u></p> <p>FEMALE & MALE KATA FEMALE KUMITE (+68KG) MALE KUMITE (+84KG)</p> <p><u>BRONCE MEDALS & FINALS</u></p> <p>FEMALE & MALE KATA FEMALE KUMITE (+68KG) MALE KUMITE (+84KG)</p>
SATURDAY, 25/04/2026 09:00-20:30	<p><u>ELIMINATIONS & SEMI-FINALS & REPECHAGES</u></p> <p>FEMALE & MALE TEAM KATA FEMALE KUMITE (-50KG, -55KG) MALE KUMITE (-60KG, -67KG)</p> <p><u>BRONCE MEDALS & FINALS</u></p> <p>FEMALE & MALE TEAM KATA FEMALE KUMITE (-50KG, -55KG) MALE KUMITE (-60KG, -67KG)</p>
SUNDAY, 26/04/2026 09:00-19:00	<p><u>ELIMINATIONS & SEMI-FINALS & REPECHAGES</u></p> <p>FEMALE KUMITE (-61KG, -68KG) MALE KUMITE (-75KG, -84KG)</p> <p><u>BRONCE MEDALS & FINALS</u></p> <p>FEMALE KUMITE (-61KG, -68KG) MALE KUMITE (-75KG, -84KG)</p>

*The detailed competition schedule will be finalized after online registration has been completed and after registration has been completed in order to adapt it to the final number of athletes.

9. RANKING

Competitors can earn ranking points in every Karate One event according to the official WKF Ranking as can be seen in Section 2 (Points per Place) and Section 4 (Points Calculating System) of the WKF Ranking Rules.

The Event Ranking is defined as a static file which reflects on the ranking on the opening day of the online registration for a given event.

10. ONLINE REGISTRATION & OFFICIAL ACCREDITATION

Registration starts three (3) months prior to the event, **(26/01/2026)**, and close fifteen (15) days before the tournament **on (26/01/2026), at 12:00 hrs GMT +0**

All registration in a Series A event must be processed ONLINE.

NO REGISTRATION WILL BE ACCEPTED AFTER THE OFFICIAL ONLINE REGISTRATION DEADLINE, AND ALL REQUESTS WILL BE DECLINED.

Onsite registrations will NOT be accepted.

Registrations subjected to the payment of a registration fee will not be validated until the payment is completed through the online payment platform. Please note that **category changes and athlete replacements will not be processed during the onsite accreditation session.**

Onsite payments will NOT be accepted.

Individuals and National Federations are responsible for the quality of the entered registration data.

The online registration will be openly disclosed for everyone from the beginning, allowing consultation by WKF NFs of the events' participants registered in real time.

Any issue regarding online registration has to be notified to the software provider and to the WKF, latest five days before the first day of competition, in order to allow taking them in consideration without altering the smooth running of the process.

Technical Support for Online Registration

In case of any questions concerning the online registration please directly contact the Sportdata software team via the email address; karate1@sportdata.org

10.1 Athletes Registration

Athletes' registration is divided in the following phases (all phases will close at the 12:00 hrs GMT +0 of the listed day)

- Phase 1, from (January 26, 2026, to February 9th, 2026, Registration **only by National Federations** for athletes ranked between position 33 and 100 (included) of the Event Ranking. Maximum, 1 athlete per category.
- Phase 2, from 10th of February to the 9th of April 2026 Open registration

All **competitor** registrations must be processed **ONLINE**:

[ATHLETES
REGISTRATION](#)

10.1.1 Entry Fee

The entry fees are as follows:

- Per individual category entry:
 - 125 €
- Per team category:
 - 250 €

10.1.2 Non-Reported Absences

1. Any cancellation of an online registration must be **for a justified and duly accredited cause** and must be communicated in writing to the WKF (events@wkf.net) at least **48 hours before the first day of the competition.** **Title:** SA Absence + (event) + (WKF ID)

Participation can only be refused for the following justified reasons:

- Injury or health-related reasons.
 - Disciplinary sanctions.
 - Personal reasons (work or family nature).
2. In cases of unjustified and unaccredited absence, a €300 fine will be imposed on the athlete during the next registration for a WKF Official event.

10.1.3 Replacement List

1. You may sign up for the **Replacement List** when a category is full by selecting your desire category during the normal registration process, after which payment will not be request and your entry will be listed as Replacement List – ‘Category’.
2. The Replacement list is **only** to as a means of contacting the athlete if and entry declares their absence prior to the event. It does in **NO WAY** imply or suggest that you have been registered for the event, or that you have been promised a place in the event.

Contacting a Replacement:

1. If an absence is confirmed via WKF, then, the first registered athlete will be contacted immediately **by email** with instructions to complete their payment within a strict 24 hours.
2. Failure to complete the registration **within 24 hours** will lead to the complete removal of the entry and the next person on the replacement list will be contacted.
3. After the registration closes, you can still be put your name onto the replacement list manually by writing the WKF (events@wkf.net) up to 7 days before the competition. **Title:** SA Replacement List + (event) + (WKF ID)

10.1.4 Payment

All payments must be processed through the ONLINE PAYMENT PLATFORM. Onsite payments will NOT be accepted.

10.2 Referees Registration

[REFeree
REGISTRATION](#)

After accessing the registration page, you will need to choose your registration group:

- **Referees with WKF and/or Continental License:** the WKF reserves its right to stop the registration once the number of registered referees with WKF and/or Continental License has reached the number of 90.
- **Referee Commission Members**
- **Referees ranked within the top 30 of the WKF Referee Ranking on the opening date of registration for each event.**
- **NF Referees without WKF and/or Continental License**

The Referee Ranking applicable for the A CORUÑA 2026 Series A will be the one on the opening day of the online registration, 26/01/2026.

REFEREE RANKING

TOP 30

Referee registration will open on (26/01/2026), at 12:00 h GMT+0 and close (09/04/2026) at 12:00 h GMT +0.

The minimum level required to perform as a coach in Series A events is the WKF Accredited Coach Certification (Coach level 1).

10.3 Coaches Registration

All **coach** registrations must be made **ONLINE**:

COACH
REGISTRATION

Coach registration will open on (26/01/2026) at 12:00 h GMT+0 and close (09/04/2026) at 12:00 h GMT +0.

10.4 Official Onsite Accreditation

The onsite official registration session will take place on (day before the first day of competition), 23 April from 10 h to 17 h at **RIAZOR HOTEL**.

If changes are required during the official accreditation session due to incorrect registration data, a fee of €50 will be charged for each change. Please note that **category changes and athlete replacements will not be processed during the onsite accreditation session.**

The athlete's accreditation must contain an updated photograph that allows the athlete to be identifiable throughout the event.

Coaches must collect their accreditation cards during the coach briefing. Those who do not attend the briefing and collect their cards at that time will not receive accreditation.

At registration, accreditation cards will be issued with the participants' main data, a photograph and information about registered categories. The accreditation card must be worn at all times during the event.

Only members of national federations recognized by WKF are admitted to participating, following the registration procedures described in Series A Organising Rules (SA OR Point 6 Registration).

All participants must submit an official passport for the WKF identification and validation at the accreditation session.

The accreditation of any competitor must be done by the athlete or the athlete's coach, in person bringing the athlete passport at the accreditation session.

Any competitor who may not have collected their accreditation during the official accreditation session, either personally or through their coach, WILL NOT BE INCLUDED IN THE DRAW.

10.5 Technical Support for Online Registration

Web: https://www.sportdata.org/wkf/set-online/index.php?active_menu=home

Email: karate1@sportdata.org

The weighing will be carried out immediately after receiving the accreditation, those athletes who will not attend the weighing will not be included in the draw.

11. MANDATORY DOCUMENTS

MANDATORY DOCUMENTS TO BE SUBMITTED AT THE OFFICIAL ACCREDITATION

At the onsite registration, all participants (Coach, Athletes, Referees, Officials) must submit a printed and signed Waiver of Liability form.

There are 2 types, one is for the Club/Team Representative, while the other one is for all other participants. Please find the links below.

The LOC will be responsible for the collection and safe custody of all submitted waivers.

Waiver of Liability Forms:

- i. NF/Team Representative Waiver ([link](#))
- ii. Individual +18 Form ([link](#))
- iii. Individual -18 Form ([link](#))

• The NF/Team Representative takes full responsibility for the validity of all signatures and information provided.

12. ANTI DOPING EDUCATION

As a participant in karate, it is your responsibility to follow the WKF Anti-Doping Rules. Click the [here](#) to take an Anti-Doping Education & Learning Course and learn more about your responsibilities and visit our [website](#). In exchange for a few hours, you help keep karate a clean sport.



Course Recommendations

International-level Athletes Education
High Performance Coach Education
Medical Professionals Education
Parents of Elite Athletes Education

13. WKF ACCREDITED COACH

According to the Coach License Manual, **the minimum level required to take part in the Karate One events is the “Accredited Coach” level.** To obtain such certification, **coaches must attend a compulsory Coach Briefing.**

13.1 WKF Coach Programme / Accredited Coach Certification (level 1)

Please find below the Coach schedule and the details for the registration process:

13.2 Schedule

ACCREDITED COACH BRIEFING				
Thursday	23rd of April	From 17:00	To 18:30	Palacio Deportes Riazor

13.3 Online Registration

Those coaches who wish to attend to the “WKF Accredited Coach Briefing” in A CORUÑA must be registered online and must fill out the “Accreditation Agreement for Coaches” that can be downloaded from the online registration site.

All coach registration must be made online at the latest by April 9th, 2026.

[ACCREDITED COACH
BRIEFING COURSE
REGISTRATION](#)

Should you have any difficulties when registering, please contact karate1@sportdata.org for technical support.

13.4 Fees

Please be reminded that the fee to attend the “Coach Briefing” and to obtain a new license or to renew your expired license of WKF Accredited Coach is 300 EUR.

13.5 Payment

All payments must be made through Sportdata platform.

No other methods of payment will be accepted.

Registrations and payments onsite will not be accepted.

14. MEDIA

14.1 Press

Press accreditation can only be given to professional journalists working for a media and having proof of their credentials.

Media professionals can register to request press accreditations through the online registration form which can be found at the link below:

[PRESS
REGISTRATION](#)

Video recording will not be allowed

Should you need more information about press or media related issues, please directly contact the World Karate Federation’s office: press@wkf.net

14.2 YouTube Streaming

The event will be available by streaming on the WKF YouTube channel:
<https://www.youtube.com/user/WKFKarateWorldChamps>

15. COMPETITION VENUE

Palacio Deportes Riazor – Rua Manuel Murguía, s/n – 15011 A Coruña



TROCELLEN

OFFICIAL TATAMI FOR THIS TOURNAMENT

16. TICKET FOR SPECTATORS

No tickets required- free access for spectators.

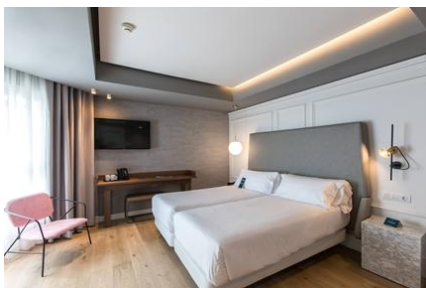
17. HQ HOTEL

HOTEL RIAZOR 4*

Av. de Pedro Barrié de la Maza, 29, 15004 A Coruña
Distance to Palacio de los Deportes Riazor 1,5 km

Recently renovated in its entirety, Hotel Riazor welcomes you to its home, La Coruña. Located at the seafront with wonderful views of the ocean, this 4-star boutique hotel offers elegant facilities where you can relax, work and enjoy the best Galician cuisine.

NOTE. HQ Hotel Riazor 4* Subject to priority sale for referees and coaches.



18. OFFICIAL HOTEL

HOTEL HESPERIA CORUÑA CENTRO 4*

Rúa Juan Flórez, 16, 15004 A Coruña
Distance to Palacio de los Deportes Riazor 1,7 km

Whatever you are coming to La Coruña for and whatever it is you need, you'll find it at this hotel close to Riazor. You only need to see its privileged location (next to the Lugo Square and a 10 minute walk from the Plaza María Pita) and the recent refurbishment that has provided it with the most modern facilities for business, events and tourism that you will find in the city, to convince yourself that this is the perfect accommodation for you in the centre of La Coruña.

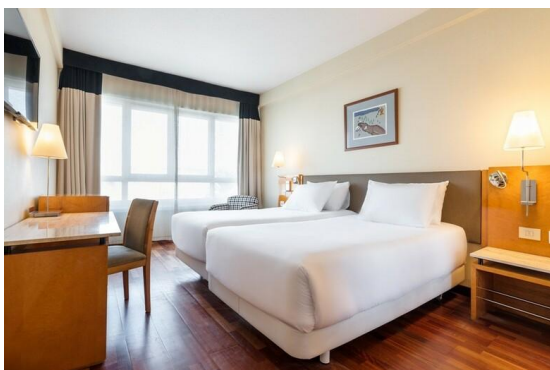


HOTEL EUROSTARS ATLANTICO 4*

Av. Jardines de Méndez Núñez, s/n, 15006 A Coruña
Distance to Palacio de los Deportes Riazor 1,9 km

Eurostars Atlántico welcomes guests from the port of A Coruña, accommodations that offer comfort, modernity and the chance to discover the city at your own pace, experiencing its streets and squares, breathing in the sea breeze and tasting its culinary delights.

Its 199 rooms are spacious and bright, full of life thanks to the functional layout of their modern furnishings. Decorated elegantly, they have a modern style and neutral tones that invite guests to relax and rest. They are equipped with a wide range of services to ensure all of guests' needs are met.

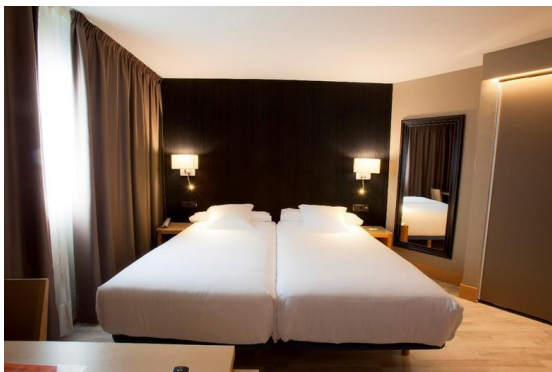


HOTEL PLAZA 4*

Rua Santiago Rey Fernandez Latorre 45, 15009 A Coruña
Distance to Palacio de los Deportes Riazor 2,5 km

The sea, its history, the soul of Galicia with a traditional spirit and majestic essence... Discovering A Coruña from the Plaza Hotel is a unique experience that combines rest, comfort and modern services in the heart of A Coruña. A spa hotel in A Coruña specially designed for business trips and family holidays which will conquer the most demanding guests.

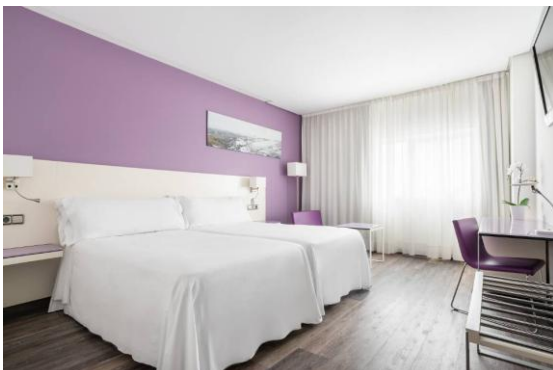
The recently refurbished Plaza Hotel in A Coruña offers a wide range of services: free Wi-Fi, Skybar rooftop bar, events rooms, spa, parking (\$), and a personalized customer service. Make your reservation on the official website of the Plaza Hotel.



HOTEL EXE CORUÑA 4*

Rua Ramon y Caja , 53 15006 A Coruña
Distance to Palacio de los Deportes Riazor 2,9 km

Exe Coruña is in the Plaza Cuatro Caminos district, the central hub of the city. It provides guests with the best possible services and facilities from a location that is perfect for discovering A Coruña. Its rooms are spacious and bright and provide guests with an unbeatable hotel experience. These cosy rooms full of extra little touches will ensure that you are able to enjoy the rest that you need after a day of work or tourist activities.



HOTEL IBIS STYLE A CORUÑA

Rua Gambrinus 14, 15008 A Coruña

Distance to Palacio de los Deportes Riazor 3,4 km

At the recently renovated ibis Styles A Coruña, you'll be at home in our spacious rooms with free WIFI, comfortable beds and great breakfast buffet. The hotel is 10 km from the airport and 2 km from Ave Station. Parking with electric car charging. As a family, children can play in the Kids' Corner and you can stay in our spacious Family Suites. The restaurant serves daily homemade lunch and dinner.



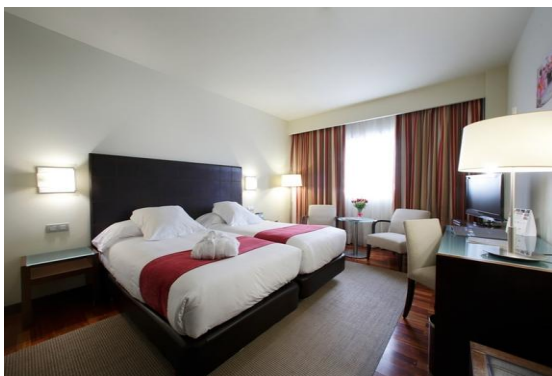
HOTEL ATTICA 21 4*

R. Enrique Mariñas Romero, 34, 15009 A Coruña

Distance to Palacio de los Deportes Riazor 5,3 km

The Hotel Attica21 Coruña is a modern urban accommodation option with 160 rooms designed to satisfy the most demanding guests and offering a wide range of facilities. Located in a modern building featuring cutting-edge architecture, it is renowned for its personalised service and a fabulous combination of comfort and functionality, making it a firm favourite with guests.

The Hotel Attica21 Coruña boasts a prime location at the entrance to the city of A Coruña in the modern district of Matogrande. It is just a short distance from the airport and the main road leading into the city centre and other sites of interest, all of which are just a few minutes away.



HOTEL AVENIDA 3*

Rda. de Outeiro, 99A, 15007 A Coruña
Distance to Palacio de los Deportes Riazor 7,3 km

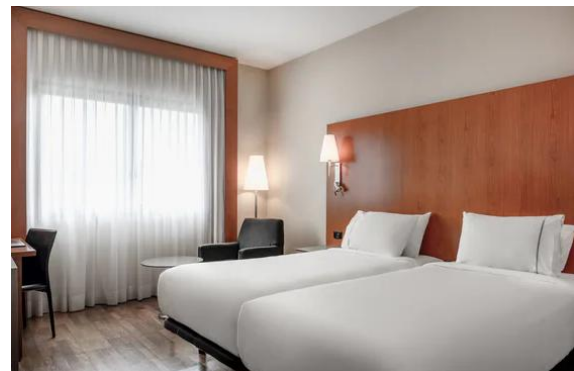
Business, relax, beach, culture... A Coruña is such a versatile and varied city that you will need accommodation like the Avenida Hotel to make the most of the city and its surroundings. Either you travel for business or for pleasure, at this urban hotel in A Coruña you will find the best customer service and modern and comfortable spaces perfect for resting. The Avenida Hotel stands out for being a hotel with free Wi-Fi in A Coruña, with rooms for events, restaurants, tapas bar, parking.



HOTEL AC CORUÑA 4*

R. Enrique Mariñas Romero, 34, 15009 A Coruña
Distance to Palacio de los Deportes Riazor 5,3 km

Located in what has been known for some time as the new business and residential area of A Coruña, this hotel is near the Expocoruña Exhibition Centre and the Coliseum Leisure Centre. The AC Hotel A Coruña is near the train station, city airport, and A-6 motorway allowing quick entry or exit to or from A Coruña. This urban hotel, perfectly located for enjoying the city or for business in A Coruña, features 116 guest rooms and a fitness center. Our guests can enjoy a delicious meal in the AC Lounge, with a varied menu open for lunch and dinner and a complete and healthy breakfast buffet in a polyvalent room. AC hotel A Coruña also features five exquisitely designed event rooms perfect for holding anything from business meetings to social get together. Free Wi-Fi access throughout the hotel so that guests can connect to the internet whenever they want.



18.2 Hotel Prices

PRICES PER ROOM AND NIGHT. BREAKFAST AND VAT INCLUDED				
HOTEL NAME	Start Rating	SINGLE	DOUBLE	TRIPLE
HOTEL RIAZOR	4*	140€	165€	TBC
HESPERIA CORUÑA CENTRO	4*	123€	139€	TBC
EUROSTARS ATLANTICO PLAZA	4*	185€	195€	TBC
EXE CORUÑA	4*	106€	135€	TBC
IBIS STYLE A CORUÑA	4*	178€	190€	TBC
ATTICA 21	2*	93€	115€	143€
HOTEL AVENIDA	4*	142€	157€	TBC
AC CORUÑA	3*	101€	125€	TBC
	4*	107€	125€	TBC

Minimum 4 nights, for shorter stay please consult.

Rates per room and night in Bed & Breakfast. VAT included.

- Ask about availability dinner at the hotel
- It will be considered as a reservation if the 1st payment has been done.
- Confirmation subject to availability at the booking request.

PAYMENT POLICY

- 50% in order to confirm the reservation
- 50% before the March 20th, 2026
- It is very important do payments in dates fixed in order to confirm your reservation.

CANCELLATION POLICY

- 1st deposit non-refundable deposits
- Cancellations after March 20th, 2026, Not refunds will be possible
- For any question, please contact with the Official Travel Agency reservas.bcdsports@bcdme.es

18.3 Transport Services

SHUTTELS	SEDAN 1-3 PAX	VAN 7 PAX	MICRO 35 PAX	BUS 55 PAX
A CORUÑA airport to A CORUÑA City	82 € vehicle	105 € vehicle	309 € vehicle	387 € vehicle
A CORUÑA train station to A CORUÑA City	70 € vehicle	90 € vehicle	267 € vehicle	323 € vehicle
SANTIAGO DE COMPOSTELA airport to A CORUÑA City	230 € vehicle	267 € vehicle	585 € vehicle	615 € vehicle
VIGO airport to A CORUÑA City	436 € vehicle	543 € vehicle	880 € vehicle	950 € vehicle

SHUTTELS	SEDAN 1-3 PAX	VAN 7 PAX	MICRO 19 PAX	BUS 55 PAX
MADRID airport to A CORUÑA City	1.670 € vehicle	1.790 € vehicle	2.510 € vehicle	2.905 € vehicle

A surcharge of €45 per hour will be applied for each hour of waiting time.

Contact for different options and more information reservas.bcdsports@bcdme.es

18.4 Meals at the Venue

There is no food service available inside the pavilion. However, there are numerous restaurants, bars, and cafés in the immediate vicinity of the pavilion.

19. VISA REQUIREMENTS

Entry requirements:

<https://www.interior.gob.es/opencms/en/servicios-al-ciudadano/tramites-y-gestion/es/extranjeria/control-de-fronteras/entrada-en-espana/>

List of nationals of third countries required to be in possession of a valid visa:

<https://www.exteriores.gob.es/Consulados/washington/en/ServiciosConsulares/Documentos/2018%20Lista%20países%20que%20necesitan%20visado%20Schengen.pdf>

Please submit your request **before 2nd of March** to provide you with the necessary paperwork in due time. Should your request arrive after this deadline, the Spanish Karate Federation cannot guarantee the issuance of visas for team members or officials.

E-mail: events.assistant@rfek.es

20. A CORUÑA INFORMATION

20.1 About A CORUÑA

A beautiful city located on the northwest coast of the Iberian Peninsula, in the Rías Altas.

With an important historic port, it is located on the northwest coast of the Iberian Peninsula, in the Rías Altas. The center of the city extends over a peninsula linked to the mainland by a narrow isthmus, which is why it has two different sea fronts: the port (towards the A Coruña estuary) and the other open sea, towards the Orzán cove, and on which the main urban beaches (Riazor and Orzán) extend.

Monuments

It has three major landmarks that make it known worldwide: the Tower of Hercules, the oldest operating lighthouse in the world and a World Heritage Site since 2009, the galleries of A Coruña that give the city the nickname "City of Cristal" and the promenade of La Coruña, the longest promenade in Europe that makes La Coruña also called "Balcón del Atlántico".

Some history...

During Roman times, a troop of Romans commanded by Julius Caesar arrived in the city in the year 62 BC. C., naming it Brigantium.

They were in charge of building the Tower of Hercules in the first century AD. C., the oldest lighthouse in the world still in operation.

Nowadays, the city has not stopped growing and modernizing. Carrying out the construction of an important network of museums, including La Casa de las Ciencias, La Casa del Hombre y La Casa de los Peces.

In addition to many other buildings and monuments throughout the city, linked by the picturesque and already named Paseo Marítimo

20.2 How to get to A CORUÑA

A Coruña has an international Airport; and the Santiago Airport (Rosalia de Castro) is located 60km approximately from A Coruña.

Another option would be to get to Madrid. From here, there are several options to get to the event:

- **Plane:**

Aeropuerto A Coruña (Av. Hermida, 15174 Rutis, A Coruña) Distance - **15 km.**

Aeropuerto de Santiago (Rosalia de Castro, Lavacolla S/N, 15820 Santiago de Compostela, A Coruña) Distance - **80 km.**

- **Train**

Madrid-Chamartín Train Station – A Coruña

From Madrid there are several trains that leave regularly daily, the duration of the journey is 4 hours, you can buy tickets at the following link:

<https://www.renfe.com/es/es>

- **Bus**

Madrid – A Coruña

From Madrid there are several buses that leave regularly daily, the duration of the journey is 8 hours, you can buy tickets at the following link:

<https://www.alsa.es/ruta/a-coruna-madrid>

20.3 Practical Information

Languages: Spanish (Castilian) and Galician

Telephone and Mobile Networks: GSM, 3G, 4G, and 5G networks are widely available.

Climate in April: Average temperatures range from 9°C to 19°C. Expect some rain due to the Atlantic climate.

Time Zone: CET (UTC+1) in winter, CEST (UTC+2) in summer (Daylight Saving Time)

21. GENERAL INFORMATION

21.1 Currency and Exchange

Currency: Euro (€)

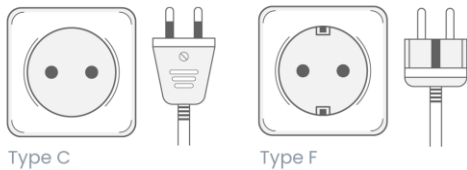
Most banks offer cash withdrawals at ATMs. Currency exchange services are available, but not all banks provide them directly. Typical bank hours are 08:30–14:00, Monday to Friday.

21.2 Business Hours

Shops typically operate Monday-Saturday 10:00-20:30 (or 10:00-13:30 and 17:00-20:30). Most close Sundays, except select supermarkets or tourist spots.

21.3 Electricity

Electricity in A Coruña uses European standard plugs (Types C and F: two round pins, with grounding clips on F). Voltage is 230V / 50 Hz (often labeled 220V, fully compatible). Dual-voltage devices (100-240V) work directly with adapters; single-voltage ones need converters.



21.4 Local Law

A Coruña enforces Spain's national laws alongside local ordinances, emphasizing respect for public order, noise limits, and sustainable tourism practices. The legal age of majority is 18 years; individuals under 18 require adult supervision for certain activities, including event access or contracts.

21.5 Vehicle Driving

Vehicle driving in A Coruña follows standard Spanish rules: drive on the right, adhere to speed limits (120 km/h on motorways, 90 km/h on rural roads, 30-50 km/h urban), and wear seatbelts everywhere.

21.6 Safety in the city

A Coruña is a safe city for visitors, with low overall crime rates and a welcoming atmosphere suitable for teams and officials. Exercise standard precautions like safeguarding valuables in crowded tourist spots such as the promenade or Old Town to avoid pickpocketing. At beaches, heed flag warnings and lifeguard advice due to occasional strong waves or undertows.

Emergency Numbers:

- Medical: 112
- Police: 092
- Fire Department: 080

22. OMISSIONS

As regards that the specific items are not expressly foreseen in the present bulletin reference is to be made to the general rules and guidelines contained in WKF Regulations.

KARATE

One

SERIES A

A CORUÑA

2026



WKF



WKF

